



Notes

1. District Center Element District Boundary: "If a boundary shall be a 5/8" (five eighths) and fifty sixth inch wide with the center point of this mark to be determined by a plane to the center of the monument, the monument shall be a 6" x 6" granite bound, 3" below grade, set on 17 July 2013. (See Notes)

Note

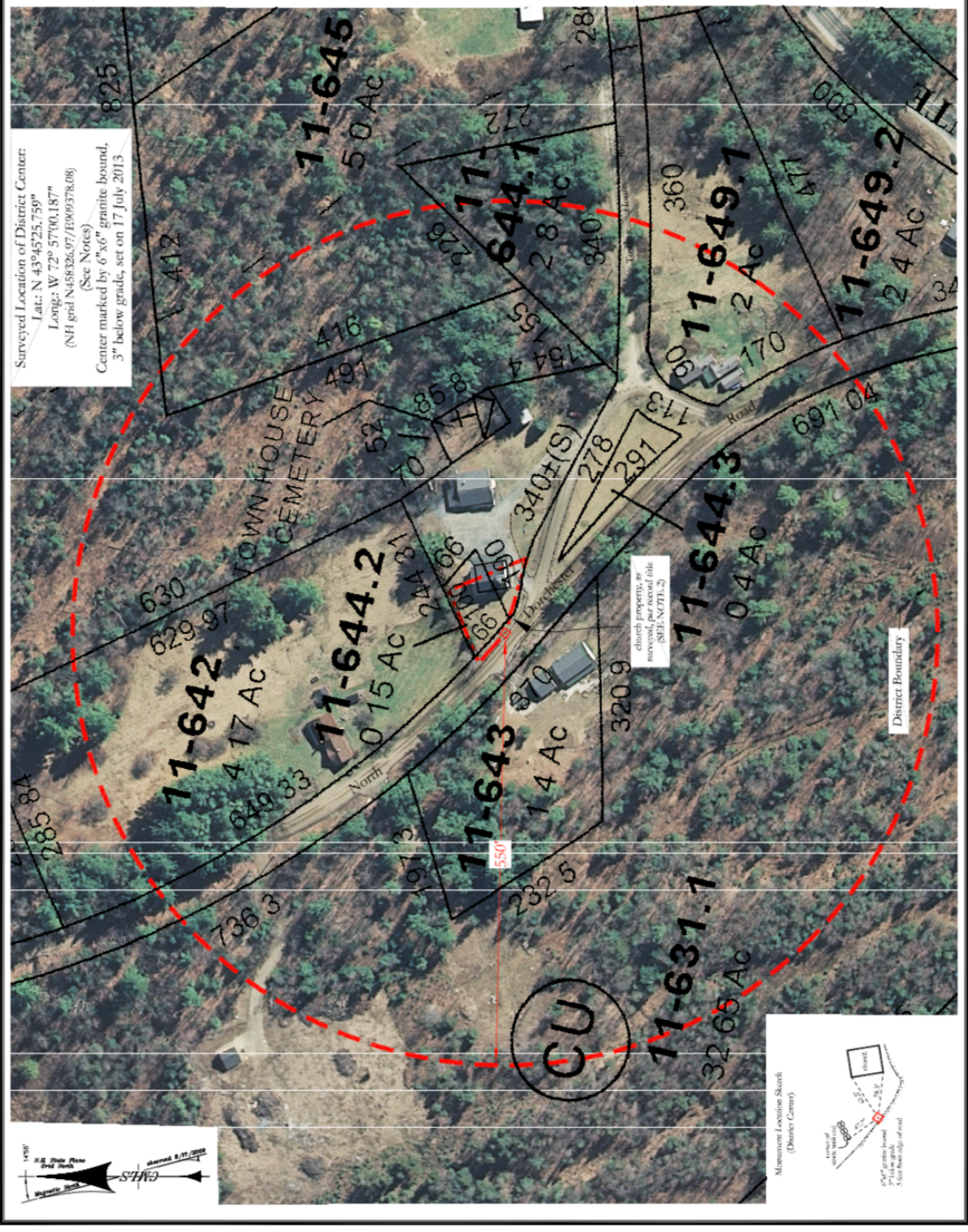
As described in the District Center Monument District Boundary Element, the monument shall be a 5/8" (five eighths) and fifty sixth inch wide with the center point of this mark to be determined by a plane to the center of the monument, the monument shall be a 6" x 6" granite bound, 3" below grade, set on 17 July 2013. (See Notes)

As described in the District Center Monument District Boundary Element, the monument shall be a 5/8" (five eighths) and fifty sixth inch wide with the center point of this mark to be determined by a plane to the center of the monument, the monument shall be a 6" x 6" granite bound, 3" below grade, set on 17 July 2013. (See Notes)

OFFICIAL MAP
of the
Town of Dorchester, NH
Dorchester Common Historical District
Plan Prepared August 2013

SCALE 1" = 50'

Cardigan Mountain
LAND SURVEYS, LLC
Scott C. Simons (603) 523-1535 Orange, NH 03101
LLS #888



Notes

1. The granite monument shall be a 5/8" (five eighths) and fifty sixth inch wide with the center point of this mark to be determined by a plane to the center of the monument, the monument shall be a 6" x 6" granite bound, 3" below grade, set on 17 July 2013. (See Notes)
2. The granite monument shall be a 5/8" (five eighths) and fifty sixth inch wide with the center point of this mark to be determined by a plane to the center of the monument, the monument shall be a 6" x 6" granite bound, 3" below grade, set on 17 July 2013. (See Notes)
3. The granite monument shall be a 5/8" (five eighths) and fifty sixth inch wide with the center point of this mark to be determined by a plane to the center of the monument, the monument shall be a 6" x 6" granite bound, 3" below grade, set on 17 July 2013. (See Notes)
4. The granite monument shall be a 5/8" (five eighths) and fifty sixth inch wide with the center point of this mark to be determined by a plane to the center of the monument, the monument shall be a 6" x 6" granite bound, 3" below grade, set on 17 July 2013. (See Notes)